



# Virginia Healthcare Workforce Briefs

Indicators from the Bureau of Labor Statistics'  
 Current Employment Statistics Survey  
**Series 1: State & National Employment**

Series 1, Issue 74

May 2018

Inside this Brief:

Virginia HC&SA Employment	2
Virginia Employment	2
National Employment	3
State Employment Growth	3
About the Data	4

Data in the report are seasonally adjusted. Self-employed persons, including health professionals in private practice, are not included.

## Highlights

- ◆ According to preliminary estimates, Virginia's Health Care & Social Assistance (HC&SA) sector enjoyed its second consecutive month of significant employment growth. After creating 1,400 jobs in March, Virginia's HC&SA sector added another 2,400 jobs in April. This represents the largest one-month employment gain in Virginia's HC&SA sector since July of 2015.
- ◆ Virginia's HC&SA sector was responsible for more than half of all statewide employment growth during the month. In April, Virginia's total nonfarm payroll increased by 4,700. With this gain, Virginia's total nonfarm payroll has now grown for four consecutive months.
- ◆ The national HC&SA sector created 29,300 new jobs across the country in April. This gain translates into a one-month annualized employment growth rate of 1.8%. In addition, this month's result represents the smallest one-month employment gain in the national HC&SA sector in five months.
- ◆ The nation's total nonfarm payroll increased by 164,000 in April, which represents a one-month annualized growth rate of 1.3%. So far in 2018, the nation's total nonfarm payroll has grown by 799,000. At the same point in 2017, the nation's total nonfarm payroll had only increased by 707,000.

## Data in Brief

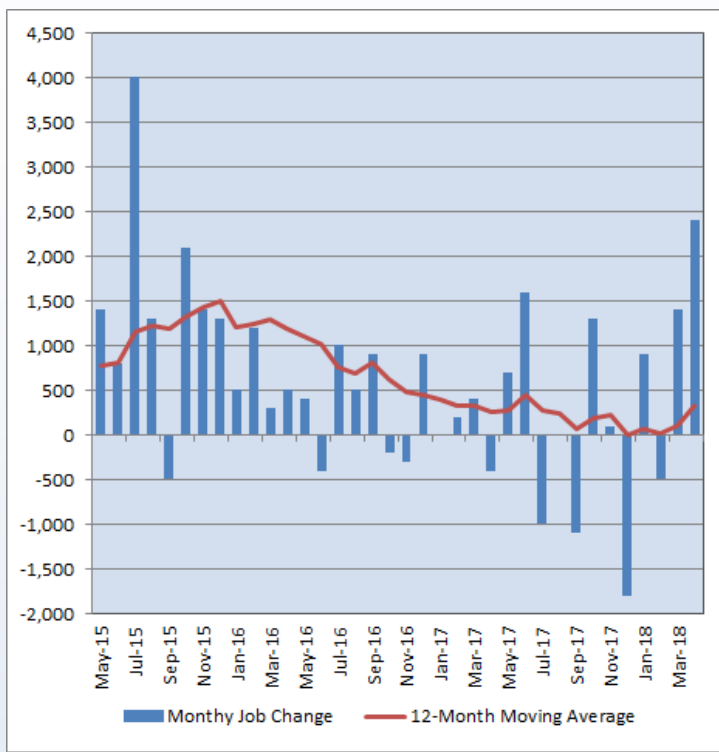
Seasonally Adjusted*	Employment, in Thousands				Growth Rate, Annualized		
	Apr. 2017	Jan. 2018	Mar. 2018	Apr. 2018	12 Month	3 Month	1 Month
<b>Nonfarm, Total</b>							
Virginia	3,947.4	3,964.9	3,989.0	3,993.7	1.2%	2.9%	1.4%
National	146,144.0	147,801.0	148,260.0	148,424.0	1.6%	1.7%	1.3%
<b>Health Care &amp; Social Assistance</b>							
Virginia	433.8	434.5	435.4	437.8	0.9%	3.1%	6.8%
National	19,436.8	19,714.5	19,790.3	19,819.6	2.0%	2.1%	1.8%
<b>All Other Nonfarm</b>							
Virginia	3,513.6	3,530.4	3,553.6	3,555.9	1.2%	2.9%	0.8%
National	126,707.2	128,086.5	128,469.7	128,604.4	1.5%	1.6%	1.3%

Preliminary estimates are italicized

\*Seasonally adjusted data are adjusted by the Bureau of Labor Statistics to account for weather, holidays and other seasonal changes. Economists use seasonally adjusted data to reveal underlying trends over time. This series uses seasonally adjusted data exclusively. When comparing data in this series to other HWDC series, or publications from other sources, it is important to note whether the data reported have been seasonally adjusted.

## Virginia HC&SA Employment

**Figure 1: Monthly Change in Employment in Virginia’s Health Care & Social Assistance Sector, Seasonally Adjusted.**



According to preliminary data released on Friday, May 18, 2018, by the U.S. Department of Labor, Bureau of Labor Statistics, Virginia’s HC&SA sector enjoyed its strongest one-month employment gain in nearly three years after creating 2,400 new jobs in April. This gain represents a one-month annualized employment growth rate of 6.8%. In addition, this result represents the second consecutive month in which Virginia has experienced strong HC&SA employment growth. In March, employment in Virginia’s HC&SA sector increased by 1,400 jobs.

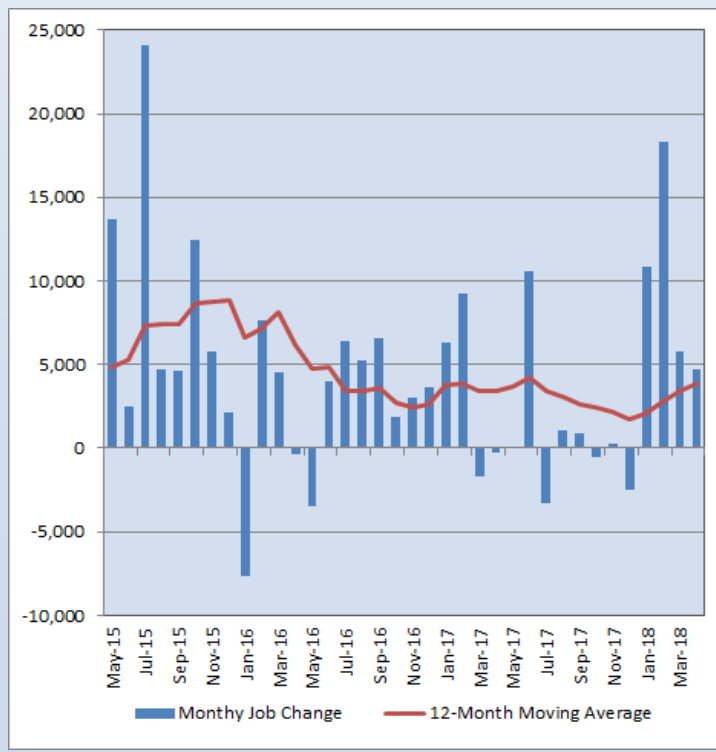
Thanks to these recent gains over the past two months, Virginia has seen a significant reversal in the 12-month moving average of the employment change in its HC&SA sector. In December of 2017, this moving average fell to a multiyear low of zero, meaning that Virginia’s HC&SA sector had not increased employment at all over the previous 12 months. However, this moving average has now increased to a ten-month high of 333 in April. This average monthly gain translates into a one-year employment growth rate of 0.9%.

## Virginia Employment

Thanks in large part to the strong employment growth in Virginia’s HC&SA sector, the state’s total nonfarm payroll increased for the fourth consecutive month. In April, Virginia’s total nonfarm payroll increased by 4,700. This gain represents a one-month annualized growth rate of 1.4%. However, April’s result also represents the smallest monthly gain in Virginia’s total nonfarm payroll since the beginning of the current four-month streak of positive employment growth in the state.

Despite this month’s smaller employment gain, it still helped to boost the 12-month moving average of the change in Virginia’s total nonfarm payroll. Since falling to a nearly four-year low of 1,683 last December, the 12-month moving average of the change in Virginia’s total nonfarm payroll has increased for four consecutive months. During this four-month rebound, the 12-month moving average of the change in Virginia’s total nonfarm payroll has more than doubled. Virginia’s total nonfarm payroll has now increased by an average of 3,858 jobs per month over the past year. This average monthly gain translates into a 12-month growth rate of 1.2%.

**Figure 2: Monthly Change in Employment in Virginia’s Total Non-farm Payroll, Seasonally Adjusted.**

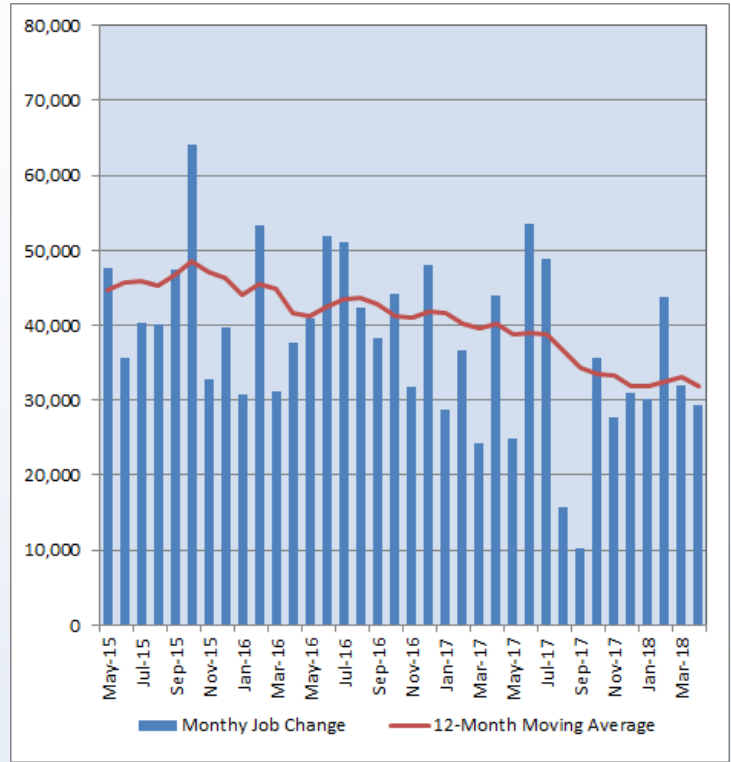


### National Employment

The national HC&SA sector created 29,300 new jobs in April, which translates into a one-month annualized employment growth rate of 1.8%. This gain also represents a slight slow-down relative to the employment growth observed in the national HC&SA sector in previous months. For instance, during the first quarter of 2018, employment in the national HC&SA sector increased by an average of 35,300 jobs per month. In fact, April's increase represents the lowest monthly employment gain in the national HC&SA sector since last November when only 27,800 HC&SA jobs were created across the country.

Meanwhile, the nation's total nonfarm payroll followed up on March's gain of 135,000 with an additional increase of 164,000 in April. This gain represents a one-month annualized employment growth rate of 1.3%. As with the national HC&SA sector, growth in the nation's total nonfarm payroll slowed down in April. Thanks in large part to an increase of 324,000 in February, the nation's total nonfarm payroll increased by an average of 211,700 per month during the first quarter of 2018. In addition, the nation's total nonfarm payroll has grown by 1.6% over the previous 12 months.

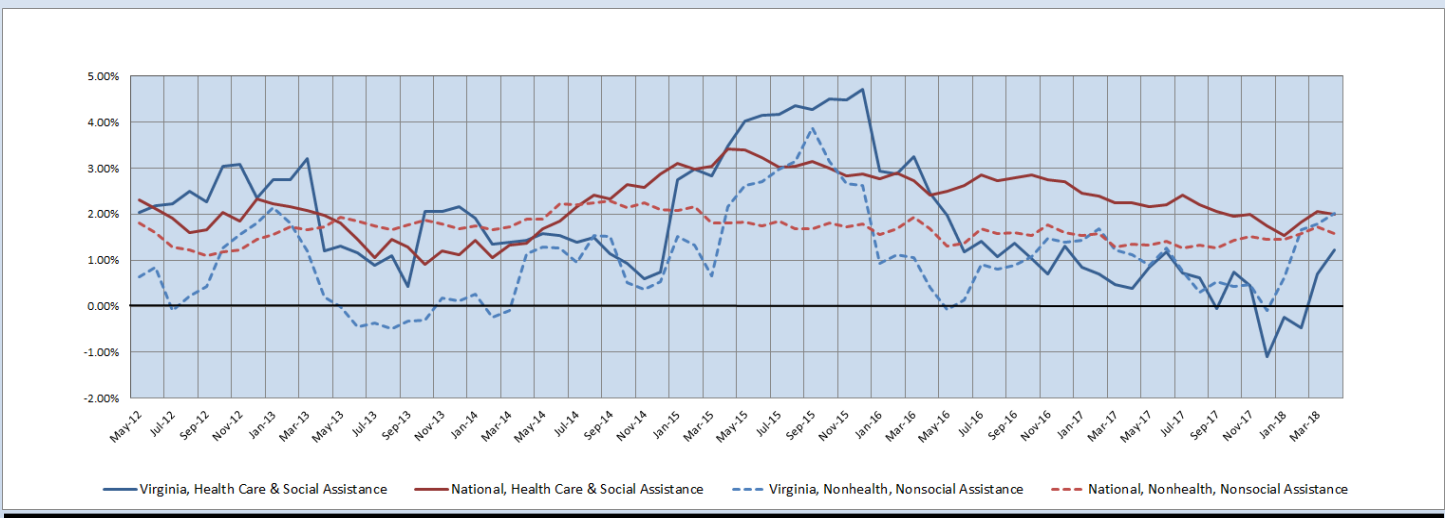
**Figure 3: Monthly Change in Employment in National Health Care & Social Assistance Sector, Seasonally Adjusted**



### State Employment Growth

The six-month moving average of the employment growth rate in Virginia's HC&SA sector has rebounded strongly in recent months, and this trend continued in April after nearly doubling during the month from 0.69% to 1.22%. With this increase, the six-month moving average of the employment growth rate in Virginia's HC&SA sector has reached its highest value in 16 months. As for the overall statewide economy, the six-month moving average of the growth rate in Virginia's total nonfarm payroll increased from 1.79% to 2.02%. Meanwhile, the six-month moving average of the employment growth rate in the national HC&SA sector fell in April from 2.06% to 1.99%, and the comparable moving average for the nation's total nonfarm payroll also fell during the month from 1.73% to 1.57%.

**Figure 4: Six-Month Moving Average, Employment Growth, Seasonally Adjusted**



**Healthcare Workforce  
Data Center**

Perimeter Center  
9960 Mayland Drive, Suite 300  
Henrico, VA 23233-1463

Phone: (804) 367-2115  
Fax: (804) 527-4434  
E-mail: [hwdc@dhp.virginia.gov](mailto:hwdc@dhp.virginia.gov)

[www.dhp.virginia.gov/hwdc/](http://www.dhp.virginia.gov/hwdc/)

*HWDC Staff:*

Elizabeth Carter, Ph.D. <i>Executive Director</i>	Yetty Shobo, Ph.D. <i>Deputy Director</i>
Laura Jackson <i>Operations Manager</i>	Christopher Coyle <i>Research Assistant</i>

Follow us on. . .

Tumblr: <http://vahwdc.tumblr.com/>

The Department of Health Professions Healthcare Workforce Data Center works to improve the data collection and measurement of Virginia's healthcare workforce through regular assessment of workforce supply and demand issues among the 80 professions and 350,000 practitioners licensed in Virginia by DHP.

The HWDC collects data on Virginia's licensed health professionals through surveys completed during the online license renewal and application process. Survey results and data may be accessed on our website: [www.dhp.virginia.gov/hwdc/](http://www.dhp.virginia.gov/hwdc/).

The HWDC also provides a series of Virginia Healthcare Workforce Briefs based on data collected by the US Department of Labor's Bureau of Labor Statistics and the US Department of Commerce' Bureau of Economic Analysis.

Virginia Healthcare Workforce Briefs:

Series 1: State & National Employment (Monthly)

Series 2: Virginia Regional Employment (Monthly)

Series 3: Income & Compensation (Quarterly)

---

**About the Data**

Data in this report are from the US Department of Labor, Bureau of Labor Statistics' Current Employment Statistics program. The CES program surveys about 143,000 businesses and government agencies monthly. Unless otherwise noted, this series uses seasonally-adjusted data that removes seasonal variations related to weather, holidays, weekends, seasons and other predictable variations. This allows us to better examine underlying trends in the labor market. Data from recent months are preliminary and subject to revision in future releases from the CES. Revisions will be reported in future editions of this series. Unless otherwise noted, the CES data presented in this series:

**Includes:**

- ◆ Data on employed individuals drawing a paycheck (payroll employees).
- ◆ All employees, regardless of role, occupation or hours worked.
- ◆ HC&SA employees in the private sector only.
- ◆ Persons employed by health professionals in private practice.
- ◆ Both government and private sector workers in nonfarm employment data.

**Does not include:**

- ◆ Self-employed workers or volunteers, including health professionals in private practice.
  - ◆ HC&SA employees in the public sector. (These are counted as government workers in monthly reports).
  - ◆ Information on hours worked or the quality of employment.
  - ◆ Government workers in HC&SA level data. (Government workers, regardless of occupation and role, are classified as public sector employees).
-